

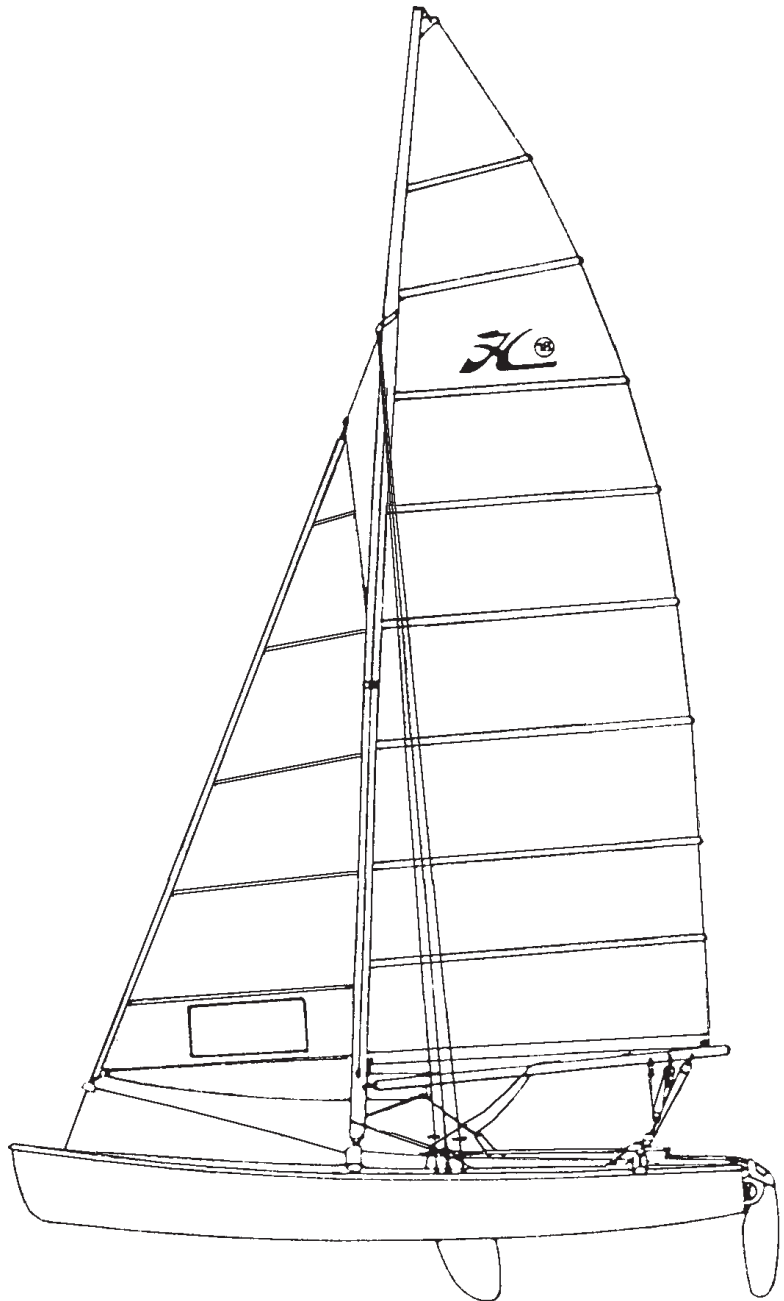
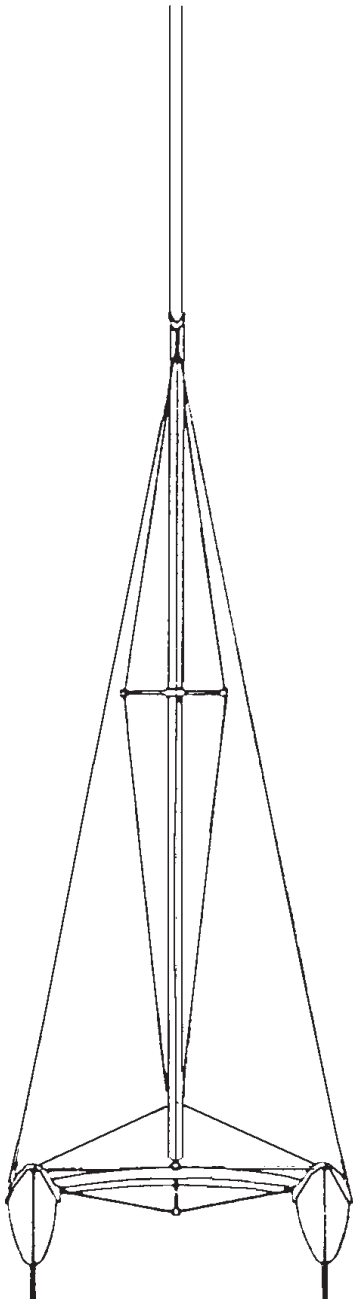


18

Eclaté des pièces détachées

Illustrated Part Guide - Explosionszeichnung

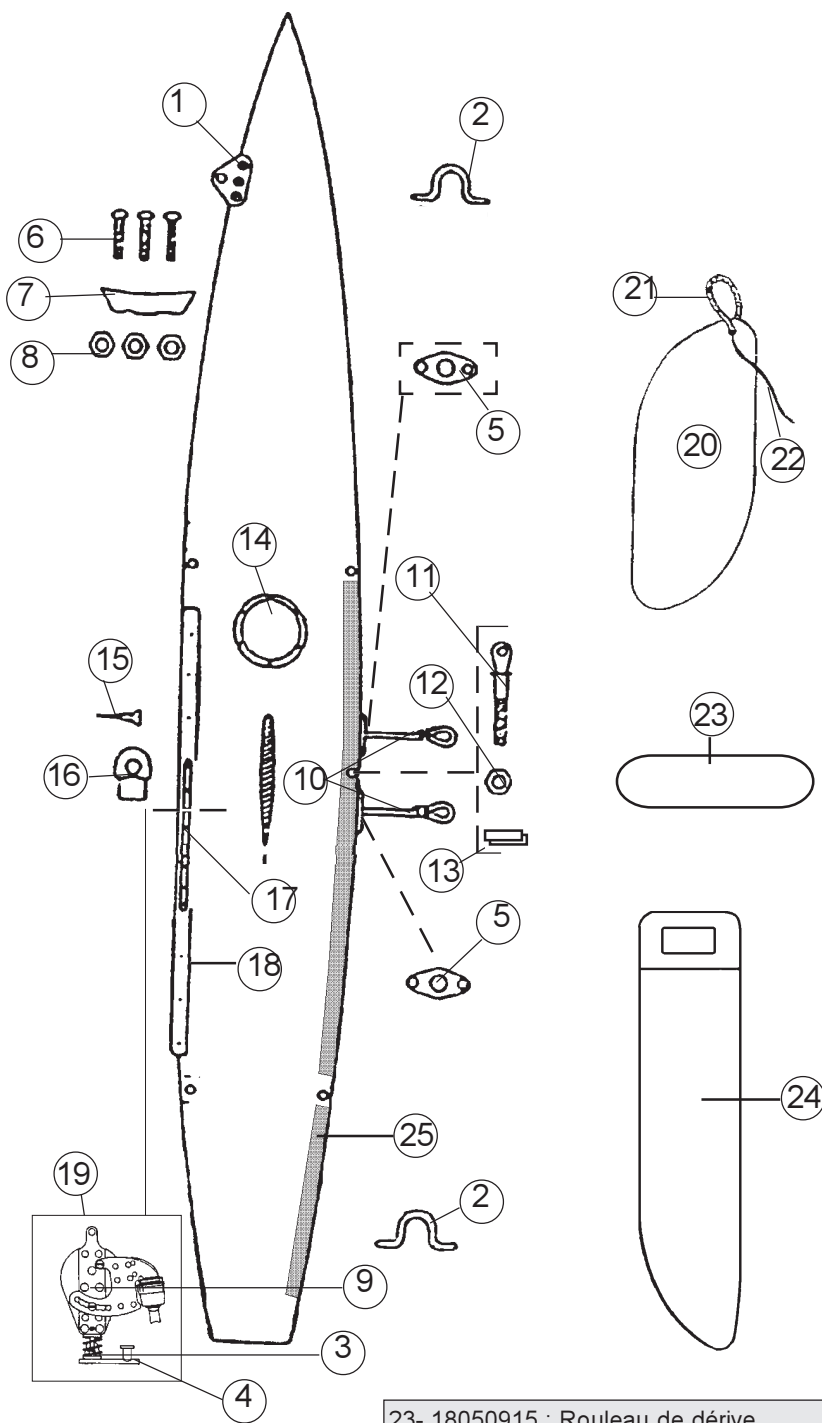
HOBIE CAT 18 & 18 FORMULA



HC 18 & 18 Formula

Coque/Hull/Rumpf

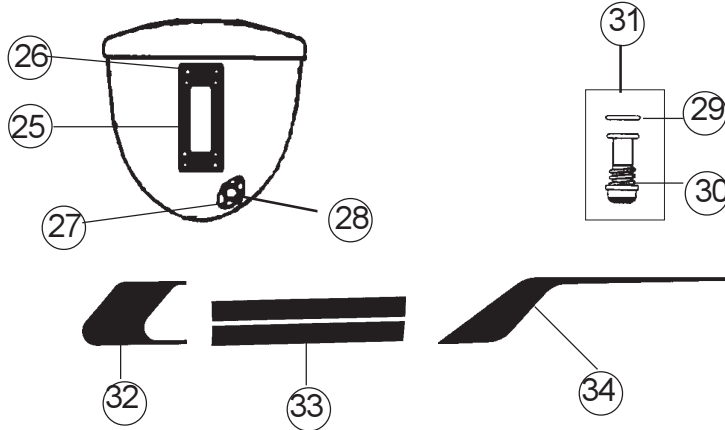
Coque/Hull/Rumpf	STD	LE	FA	PIV (LE&FA)
Gauche/Left/Links	18056101	18056171	18056161	18056127
Droite/Right/Rechts	18056102	18056172	18056162	18056128



- 1 - 18060307: Platine de bride
Bow tang
Hahnepotplatte
- 2 - 18056026: Pontet coque trap.
Hull trap. eyestrap
Rumpf Trapez Bügel
- 3 - 18060142: Ressort poulie écoute foc
Jib sheet block spring
Fockschotblock-Feder
- 4 - 16061681: Glissière chariot de foc
Jib traveler slide
Traveller Gleiter Fock
- 5 - 18041740: Guide trapeze
Fairlead trapeze
Trapezführung
- 6 - 99220303: Vis
Screw
Schraube
- 7 - 18060417: Renfort de bride alu
Backup plate bow tang
Hahnepot Befestigung Alu
- 8 - 99220019: Ecrou indessérable 6
Nylstop nut 6
Selbstsichernde Mutter
- 9 - 99500110: Poulie winch foc Harken
(LE & FA) Harken jib ratched block
Fock-Knarrblock Harken
- 10 - 18060141: Poulie winch foc Sailspeed
(STD) Sailspeed jib ratched block
Fock-Knarrblock Sailspeed
- 11 - 18056036: Sandow trap 1 boucle
Trap shock cord 1 ring
Gummistrop Trapez 1 Schleife
- 12 - 16056028: Vis cadène sup hauban
Anchor pin
Schraube f. Püttingeisen
- 13 - 99220012: Ecrou ind. 8
99220079(x20) Nylstop nut 8
99220080(x50) Selbstsichernde Mutter 8
- 14 - 18060306: Renfort de gorge
Channel retaining
Gegenstück
- 15 - 18056035: Trappe de visite 155 mm
Inspection port
Luckendeckel
- 16 - 99220090: Vis TFB 4x12,7
Screw TFB 4x12,7
Schraube TFB 4x12,7
- 17 - 16061640: Embout rail écoute foc
Jib track end stop
Fockschiene Endstück
- 18 - 16061630: Rail écoute de foc
Jib track
Fockschiene
- 19 - 18056012: Rail de trampolin percé/
Trampoline track drilled
Trampolinschiene gebohrt :
18056051=Gauche/Left/Links
18056041=Droit/Right/Rechts
- 20 - 18060143: Poulie winch foc complète
Jib ratchet block complete
Fock Knarrblock komp. H.
- 21 - 18050910: Dérive sabre 18 Std
Daggerboard 18 std
Steckschwert 18 std
- 22 - 18060430: Cordage poignée de dérive
Rope daggerboard handle
Schwertgriff
- 23 - 18060490: Sandow de dérive
Daggerboard shock cord
Gummi für Schwert

- 23- 18050915 : Rouleau de dérive
- 24- 18050911 : Dérive sabre 18 FA
Daggerboard 18 FA
Steckschwert 18FA
- 25- 18506049 : Bande néoprène
Neopren anti-skid
Neopren-Antirutsch-Belag
18506050 : Neoprène (X6) + colle
Neopren (x6) + stick
Neopren (X6) + Kleber

HC 18 & 18 Formula Coque/Hull/Rumpf

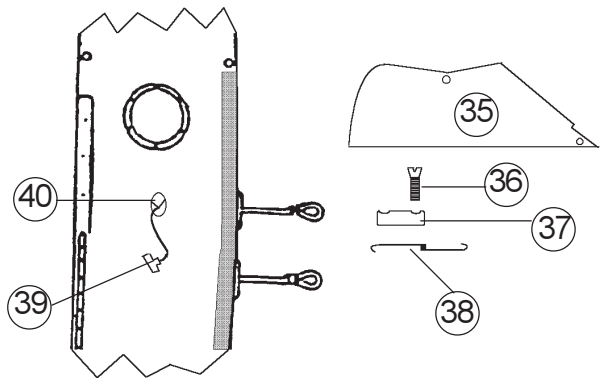


25- 18000080:	Fémelot Gudgeon Heckbeschlag
26 - 99226001:	Vis TC fémelot Screw TC gudgeon Schraube TC Heckbeschlag
27 - 99220074:	Vis TF Bouchon Screw TF plug Ablass-Schraube TF

28- 99056012:	Platine bouchon vidange Drain housing Platte f. Ablass-Schraube
29- 99220041:	Joint bouchon vidange Drain gasket Dichtung Ablass-Schraube
30- 99220040:	Bouchon vidange Drain plug Ablass-Schraube
31- 99220043 :	Bouchon + joint Drain plug + gasket Ablass-Schraube + Dichtung

32- Embout noir/Black stripe end cap/ Endst.Klebestr.schwarz	99056051 : droit/right/rechts 99056099 : gauche/left/links
33- 17056081 :	Bande Molokai coque Molokai hull stripe Klebeband Molokai f. Rumpf
34- Embout band Molokai/Molokai hull stripe end/ Endst. Molokaistreifen	17056083 : droit/right/rechts 17056082 : gauche/left/links

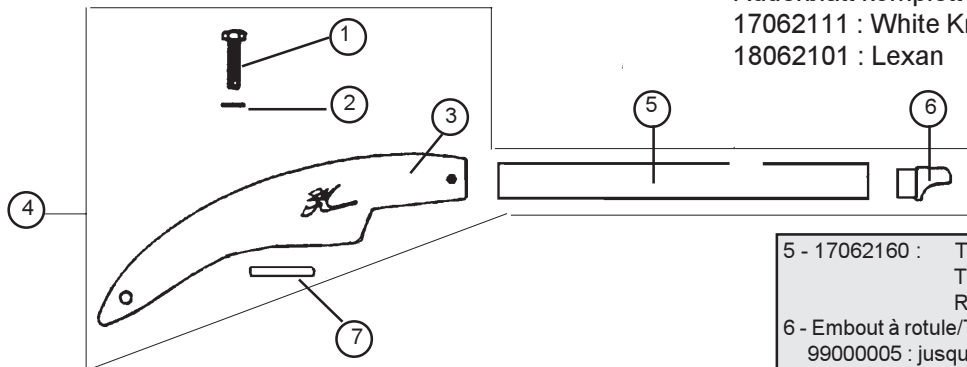
35- 18050914:	Dérive pivotante Centreboard Klappschwert
36- 99220072:	Vis TF MTF screw Schraube
37- 17060310:	Axe dérive Centerboard pin Schwertachse
38- 17056020:	Ressort de dérive Centerboard spring Schwertfeder
39- 17060430:	Poignée dérive Centerboard handle Schwertfallgriff
40- 17060410:	Taquet coinreur dérive Jam cleat centerboard Schwert Klampe



Gouvernail droit complet/Rudder assy right complet
 Ruderblatt komplett rechts :
 17062110 : White Knight
 18062102 : Lexan

HC18 & 18 Formula
Safran/Rudder/Ruderblatt

Gouvernail gauche complet/Rudder assy compl. left
 Ruderblatt komplett links :
 17062111 : White Knight
 18062101 : Lexan



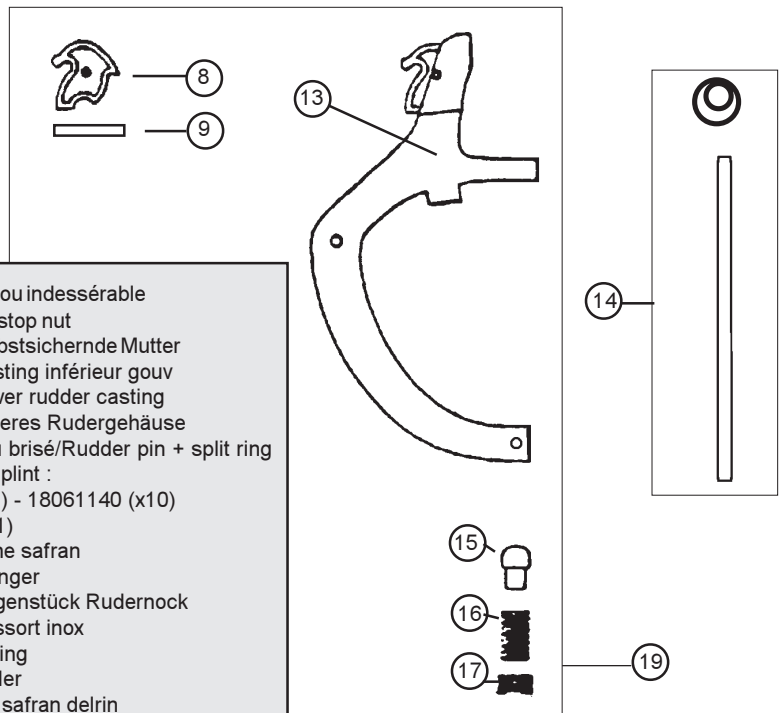
- 1 - 99221123: Vis TH 8x30 casting
Cast.bolt
Schraube Gußteil
- 2 - 99061110: Rondelle plate
Washer
Unterlegscheibe
- 3 - 17000010: Casting supérieur Gouv.
Upper rudder casting
Oberes Rudergehäuse
- 4 - 17062130: Bras gouv.droit complet
Tiller arm right complete
Ruderarm rechts komplett
17062131: Bras gouv.gauche complet
Tiller arm left complete
Ruderarm links komplett

- 5 - 17062160 : Tube de Gouvernail
Tiller tube
Ruderrohr
- 6 - Embout à rotule/Tiller end cap/Ruderarmendstück
99000005 : jusqu'à/till/bis Sept 1996
99061105 : depuis/as from/ab Sept. 1996
- 7 - 14061122: Platine dural
Cam stop plate
Platine f. oberes Rudergehäuse
- 8 - Came safran/Plastic cam/Rudernock
14061180 14061170 (x3)
14061181 (x20) 14061182 (x50)
- 9 - 16041755: Goupille élastique
Maststep pin
Sprengbolzen
- 10 - Lame safran /Ruder blade /Ruderblatt
99502150: White Knight 99502175 (18FA)
18062180:Lexan
- 11- Vis safran/Rudder bolt/Schraube Ruderblatt
Lexan : TH 8x55 :99220150
WK : TH 8x60 : 99220003 - 99220066 (x50)

HC18 - Eclaté des pièces détachées/Illustrated part guide/Explosionszeichnung (2000-2001)



- 12-99220012: Ecrou indessérable
99220079 (x20) Nylstop nut
99220080 (x50) Selbstsichernde Mutter
- 13- 17000005: Casting inférieur gouv
Lower rudder casting
Unteres Rudergehäuse
- 14- Aiguillot + anneau brisé/Rudder pin + split ring
/Ruderbolzen + Ringsplint :
Alu : 18080340 (x1) - 18061140 (x10)
Inox : 21080335 (x1)
- 15- 14061105: Pene safran
Plunger
Gegenstück Rudernock
- 16- 99220004: Ressort inox
Spring
Feder
- 17- 99220006: Vis safran delrin
Tension screw
Delrinschraube
- 18- 99502130:(WK) Insert lame de safran
99502160 (lex) Sheave pin rudder blade
Bolzen Ruderblatt
- 19- 17062680 : Casting inf. gouv. monté
Lower rudder cast. assembled
Unteres Rudergehäuse montiert

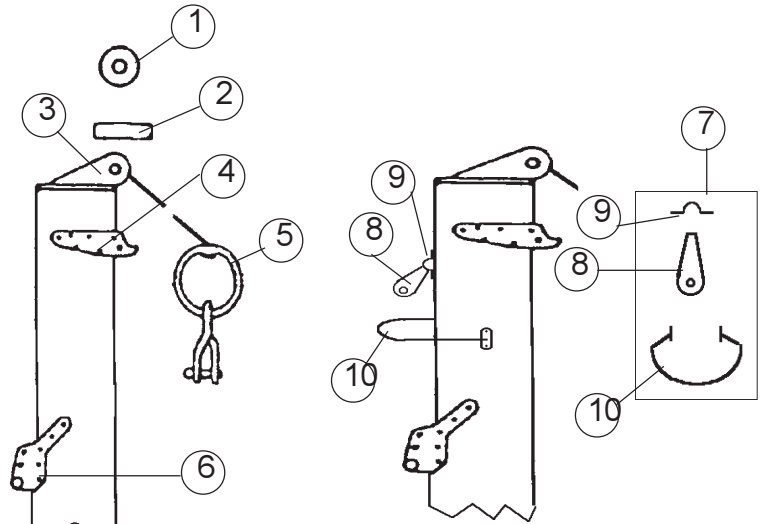


HC 18 & 18 Formula

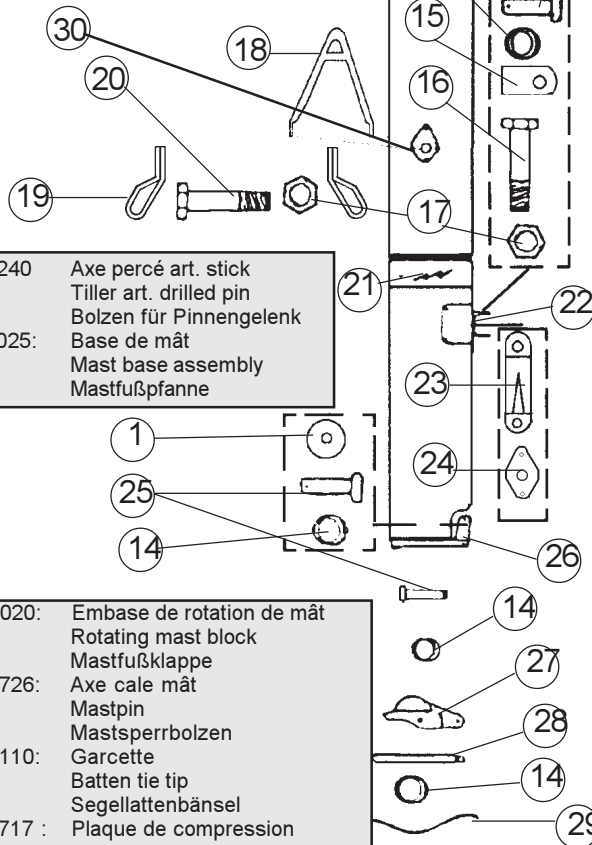
Mât/Mast/Mast

MAT COMPLET/COMPLETE MAST/MAST KOMPLETT
 18042700 : 18 STD&LE 18042740 : 18 STD&LE 2 PCS
 18042702 : 18 FORMULA 18042701 : 18 FORMULA 2 PCS

- 1 - 18041764: Réa tête de mât
Mast head sheave
Masttop Rolle
- 2 - 99220008: Axe réa
Sheave pin
Achse
- 3 - 18000030: Tête de mât
Mast head
Masttop
- 4 - 21041750: Hook de drisse
Halyard hook
Fallhaken
- 5 - 18042712: Anneau drisse + manille
Ring shackle assembly
Großfall Ring + Schäkkel
- 6 - 16041721: Ferrure de capelage
Mast tang
Mastbeschlag
- 7 - 99600010: Kit collier de spi
Spinnaker kit
Spinnaker kit
- 8 - 99500114: Poulie n° 82
Block n° 82
- 9 - 99220057: Pontet forgé
Eyestrap
Bügel
- 10- 18041721: Collier de spi
Spinnaker head mast fitting
Mastbeschlag Spinnaker
- 11- 18080510: Barrette cable de flèche
Diamond wire holder
Salingendstück
- 12- 18041711: Collier support flèche
Spreader slide adjuster
Saling Ringflansch



- 13- 99220034: Axe percé latte ridoire
99220081 (x50)
Clevis pin
Bolzen f. Locheisen
- 14- 99220031:
99220131 (x50)
99220230 (x10)
Split ring
Ringsplint
- 15- 14070351: Charnière centrale vit mulet
Goosneck hinge
Mittelstück f. Lümmelbeschlag
- 16- 99220311: Vis TH vit mulet
Screw TH gooseneck
Schraube f. Lümmelbeschlag
- 17- 99220019: Ecrou indessérable 6
Nylstop nut 6
Selbstsichernde Mutter 6
- 18- 17060302: Bras de rotation
Rotation arm
Rotationsarm
- 19- 16056022: Ferrure d'étai
Bow tang
Bugbeschlag
- 20- 99220307: Vis TH
Screw TH
Schraube TH
- 21- 14041723: Autocollant de sécurité
Mast caution label
Sicherheitsaufkleber
- 22- 18011860: Embase vit mulet
Goosneck base
Lümmelbeschlaguntersatz
- 23- 14011841: Conduit coinqueur de bôme
Boom jam cleat
Klemme Baum
- 24- 16041760: (std & LE)
99080540 : (FA)
Downhall block
Scheibenblock
Tourelle Cuningham
Downhaul swivel jam block
Drehklemme Cunningham

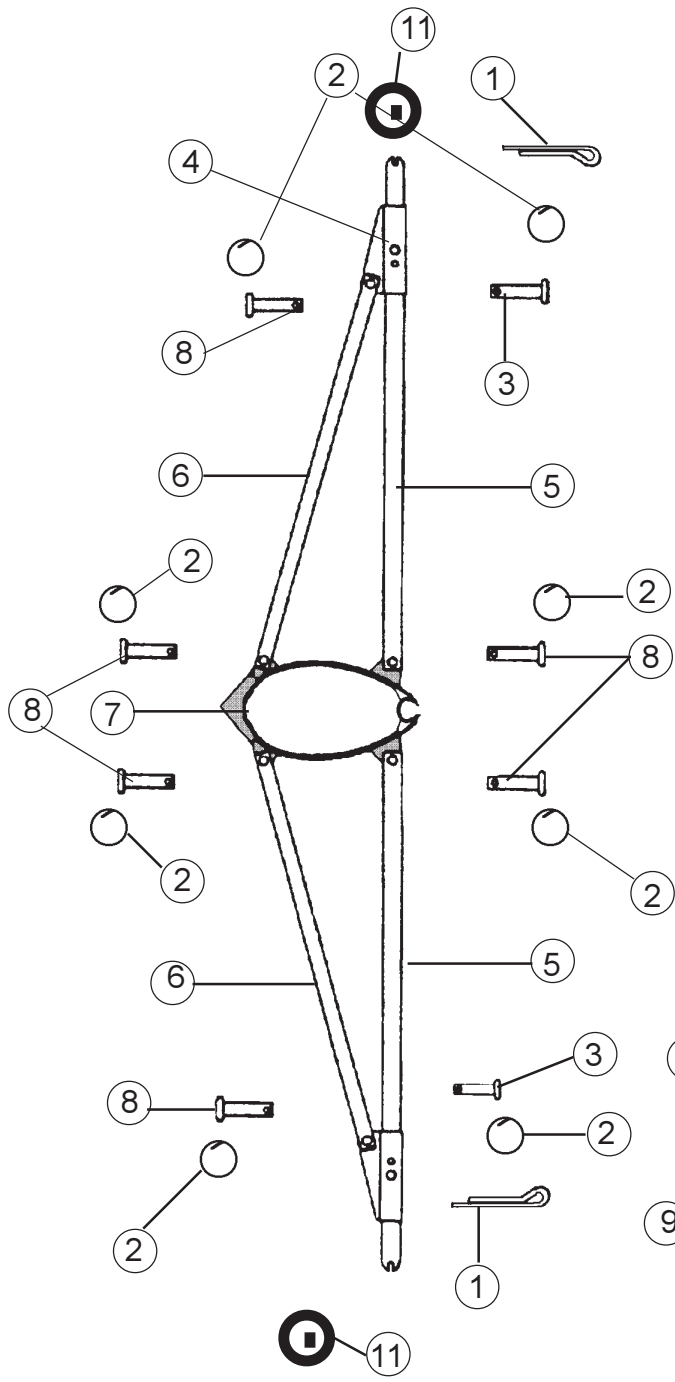


- 25- 14061240: Axe percé art. stick
Tiller art. drilled pin
Bolzen für Pinnengelenk
- 26- 18000025: Base de mât
Mast base assembly
Mastfußpfanne
- 27- 18000020: Embase de rotation de mât
Rotating mast block
Mastfußklappe
- 28- 18041726: Axe cale mât
Mastpin
Mastsperrbolzen
- 29- 99034110: Garcette
Batten tie tip
Segellattenbänsel
- 30- 18062717 : Plaque de compression
Mast rotator compression plate
Rotationsarm-Mastplatte

HC18 - Eclaté des pièces détachées/Illustrated part guide/Explosionszeichnung (2000-2001)

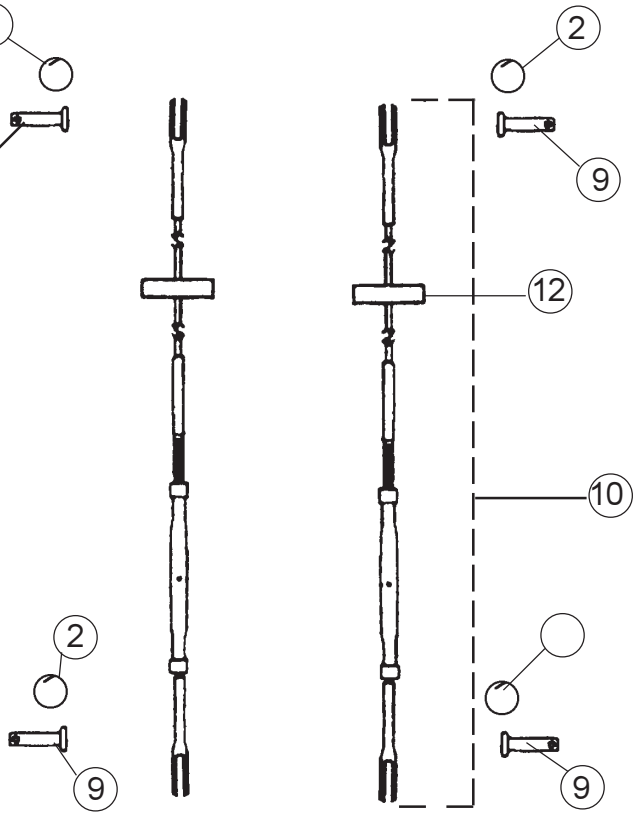
HC18 & 18 Formula
Barre de flèche et cables
Spreaders and diamond wires
Saling und Diamondwint

18060330 : KIT BARRE DE FLECHE
SPREADER ASSEMBLY
SALING KIT



- 1 - 99220037: Goupille cotter pin
Gespalt. Stift
- 2 - 99220031: Anneau brisé
99220131 (x50) Split ring
99220230 (x10) Ringsplint
- 3 - 18060315: Axe de flèche long
Spreader long pin
Salingachse lang
- 4 - 18060309: Collier barre de flèche
Spreader arm adjuster
Salingarm Flansch
- 5 - 18060304: Barre de flèche
Spreader arm
Saling
- 6 - 18060308: Support de flèche
Spreader brace
Salingstütze
- 7 - 18041711: Collier support de flèche
Spreader tang
Saling Ringflansch
- 8 - 99220047: Axe percé vit mulet
Clevis pin
Lümmelbeschlag Bolzen

- 9 - 99220034: Axe percé latte ridoire
99220081 (x50) Clevis pin
Bolzen f. Locheisen
- 10- Cable de flèche / Diamond wire / Salingdraht
Std & LE = 18060560
Formula = 18060564
- 11- 18034111: Kit protège foc Trentec
Jib protection kit Trentec
Kit Fockschutz Trentec
- 12- 18060563: Protège foc roue
Protection jib wheel
Fockschutzrolle

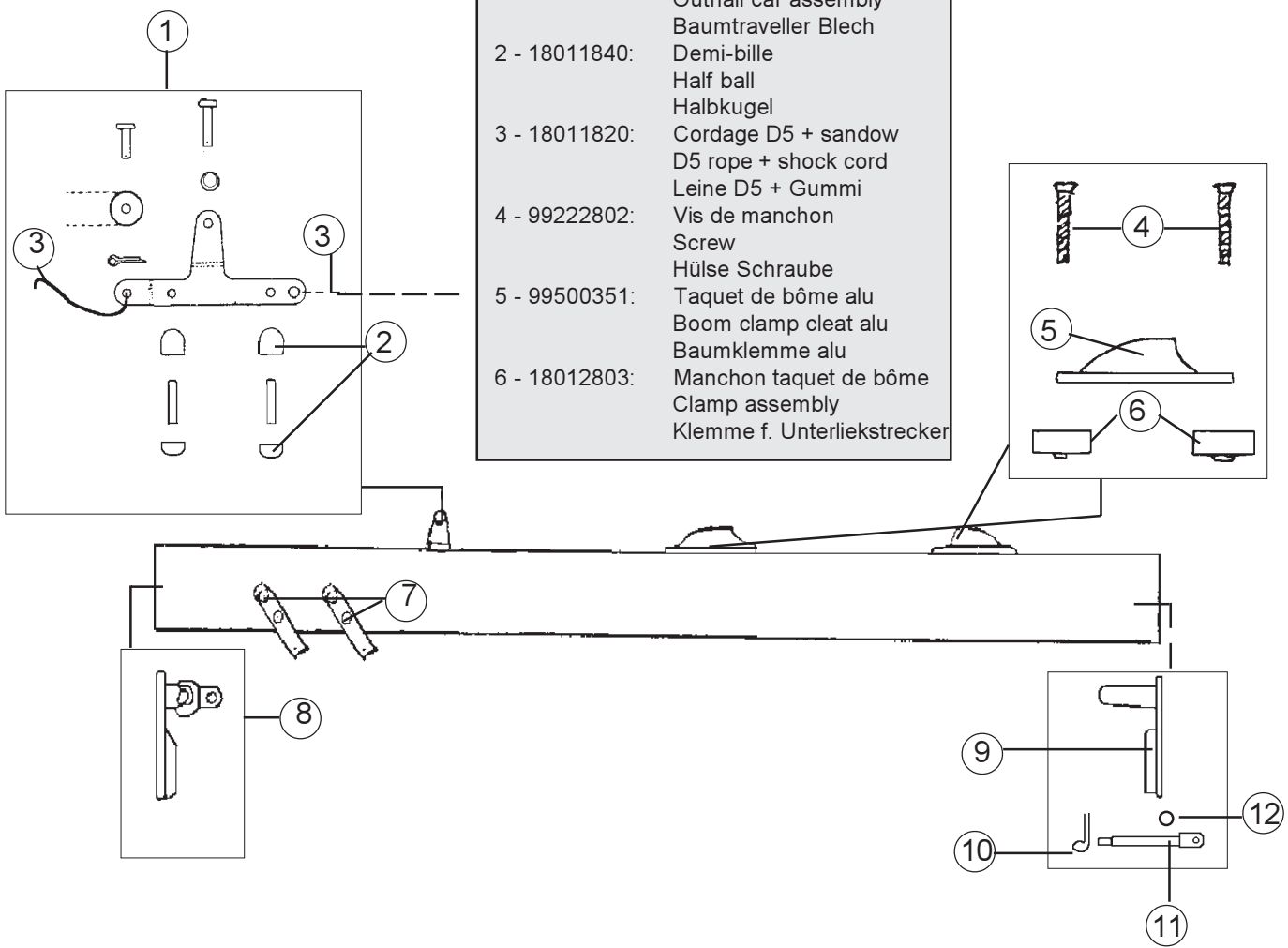


HC 18 & 18 Formula

Bôme/Boom/Baum

18012800 : BOME STD COMPLETE NOIRE
 COMPLETE BLACK BOOM STD
 BAUM SCHWARZ KOMPLETT STD

- 1 - 18011810: Chariot de bôme
Outhall car assembly
Baumtraveller Blech
- 2 - 18011840: Demi-bille
Half ball
Halbkugel
- 3 - 18011820: Cordage D5 + sandow
D5 rope + shock cord
Leine D5 + Gummi
- 4 - 99222802: Vis de manchon
Screw
Hülse Schraube
- 5 - 99500351: Taquet de bôme alu
Boom clamp cleat alu
Baumklemme alu
- 6 - 18012803: Manchon taquet de bôme
Clamp assembly
Klemme f. Unterliekstrecker



- 7 - 14011830: Collier de bôme
Block hanger
Baum Beschlag
- 8 - 18000005: Embout de bôme arrière.
Boom rear end cap
Baumendkappe hinten
- 9 - 18000010: Embout de bôme av. percé
Drilled frt boom end cap
Baumendkappe vorne gebohrt

- 10- 99220045: Goupille vit mulet
Gooseneck cotter pin
Splint Lümmelbeschlag
- 11- 14011820: Ancrage vit mulet
Gooseneck pin
Verankerung f. Lümmelbeschlag
- 12- 99220053: Rondelle nylon
Nylon washer
Unterlegscheibe nylon

HC18 - Eclaté des pièces détachées/Illustrated part guide/Explosionszeichnung (2000-2001)

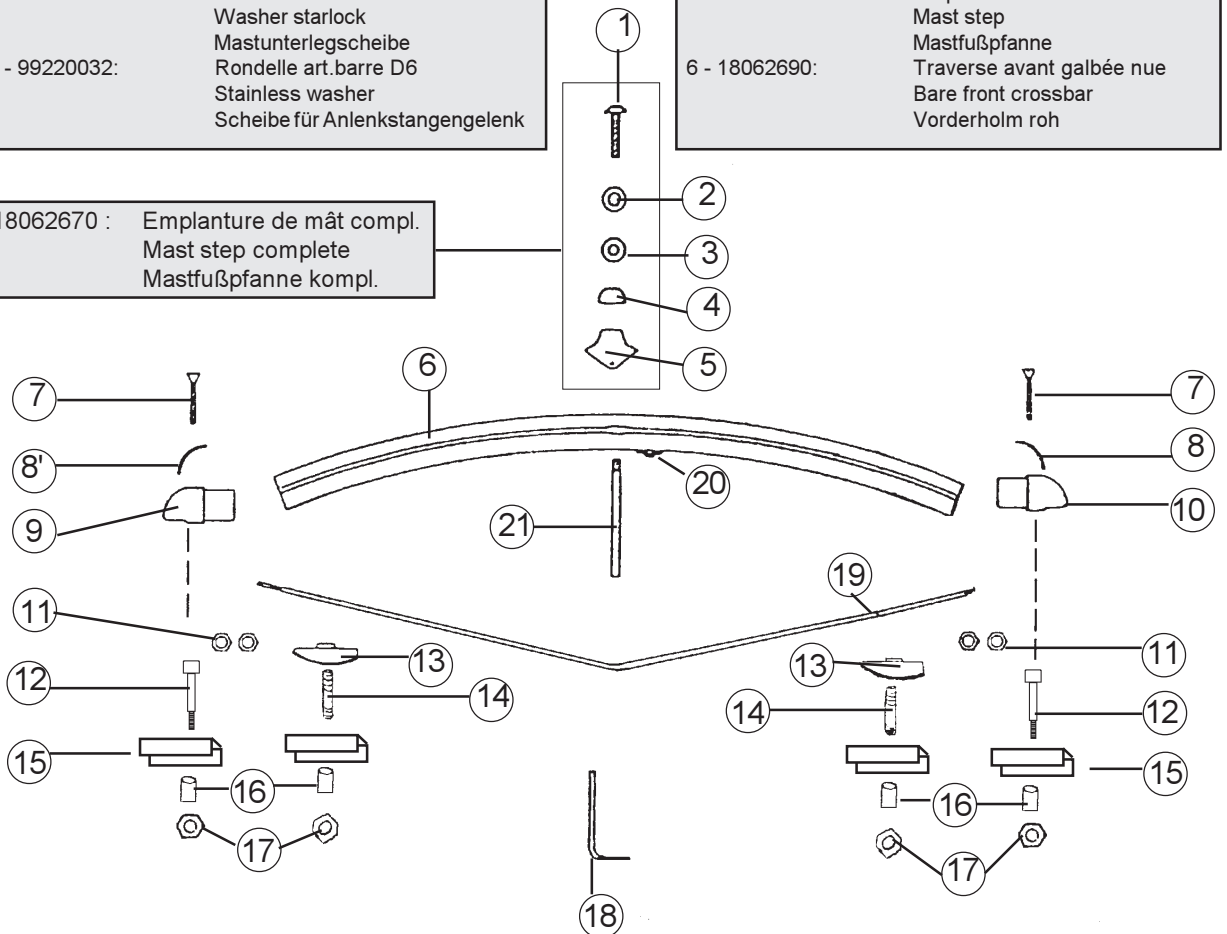


HC18 & 18 Formula
Traverse avant/Front crossbar
Vorderholm
18062625

1 - 99220017:	Vis TRL 6x16 poelier Swing arm pivot screw Gelenkschraube
2 - 18062671:	Rondelle éventail D6 Washer starlock Mastunterlegscheibe
3 - 99220032:	Rondelle art.barre D6 Stainless washer Scheibe für Anlenkstangengelenk

4 - 18042707:	Coussinet de mât Mast pivot bearing Teflonhalbkugel
5 - 18000075:	Emplanture de mât Mast step Mastfußpfanne
6 - 18062690:	Traverse avant galbée nue Bare front crossbar Vorderholm roh

18062670 :	Emplanture de mât compl. Mast step complete Mastfußpfanne kompl.
------------	------------------------------------------------------------------------

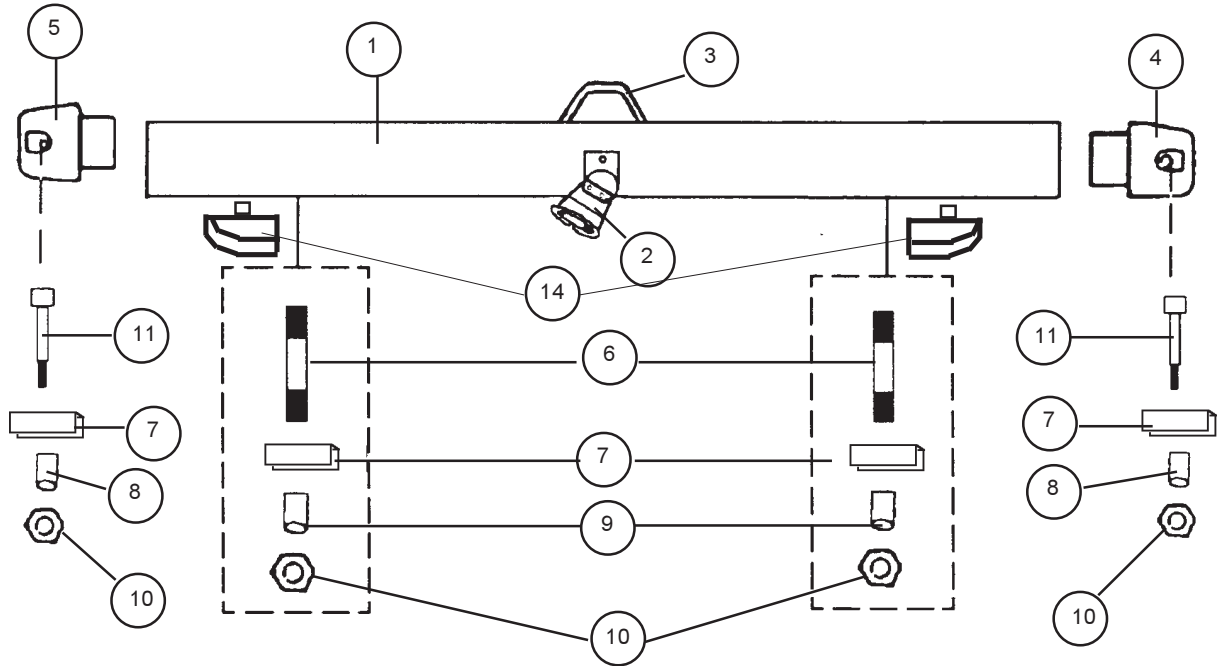


7 - 99222609:	Vis nylon Screw nylon Abdeckungsschraube
8 - 18000065:	Cache Gauche Cover left corner Abdeckung Gußeck links
8' - 18000070:	Cache droit Cover lright corner Abdeckung Gußeck rechts
9 - 18000055:	Casting avant gauche Casting front left Gußteil vorne links
10- 18000060:	Casting avant droit Casting front right Gußteil vorne rechts
11- 99220009:	Ecrou martingale Dolphin striker nut Unterzug Mutter
12- 99220301:	Vis TCH traverse Crossbar bolt Schraube
13- 18062660:	Casting intérieur Front interior casting Gußteil Vorderholm innen

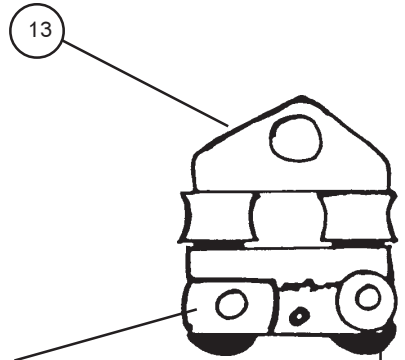
14- 99222601:	Goujon grand modèle Inserted bolt long Stiftschraube groß
15- 18060306:	Renfort de gorge Channel retaining Gegenstück
16- 18062502:	Entretoise petit modèle Bushing small model Distanzhülse klein
17- 99220302:	Ecrou indessérable Bar fastening nut Mutter Holm
18- 99220060:	Clé de montage BTR 8 Hex key Montageschlüssel BTR 8
19- 18062640:	Martingale Dolphin striker Unterzug
20- 18062615:	Conduit coinqueur Bar jam cleat Klemme Vorderholm
21- 18062655:	Etai martingale percé Dolphinstriker forestay drilled Unterzug Fuß

HC18 - Eclaté des pièces détachées/Illustrated part guide/Explosionszeichnung (2000-2001)

HC 18 & 18 Formula
Traverse arrière/Rear crossbar
Achterholm
18062500



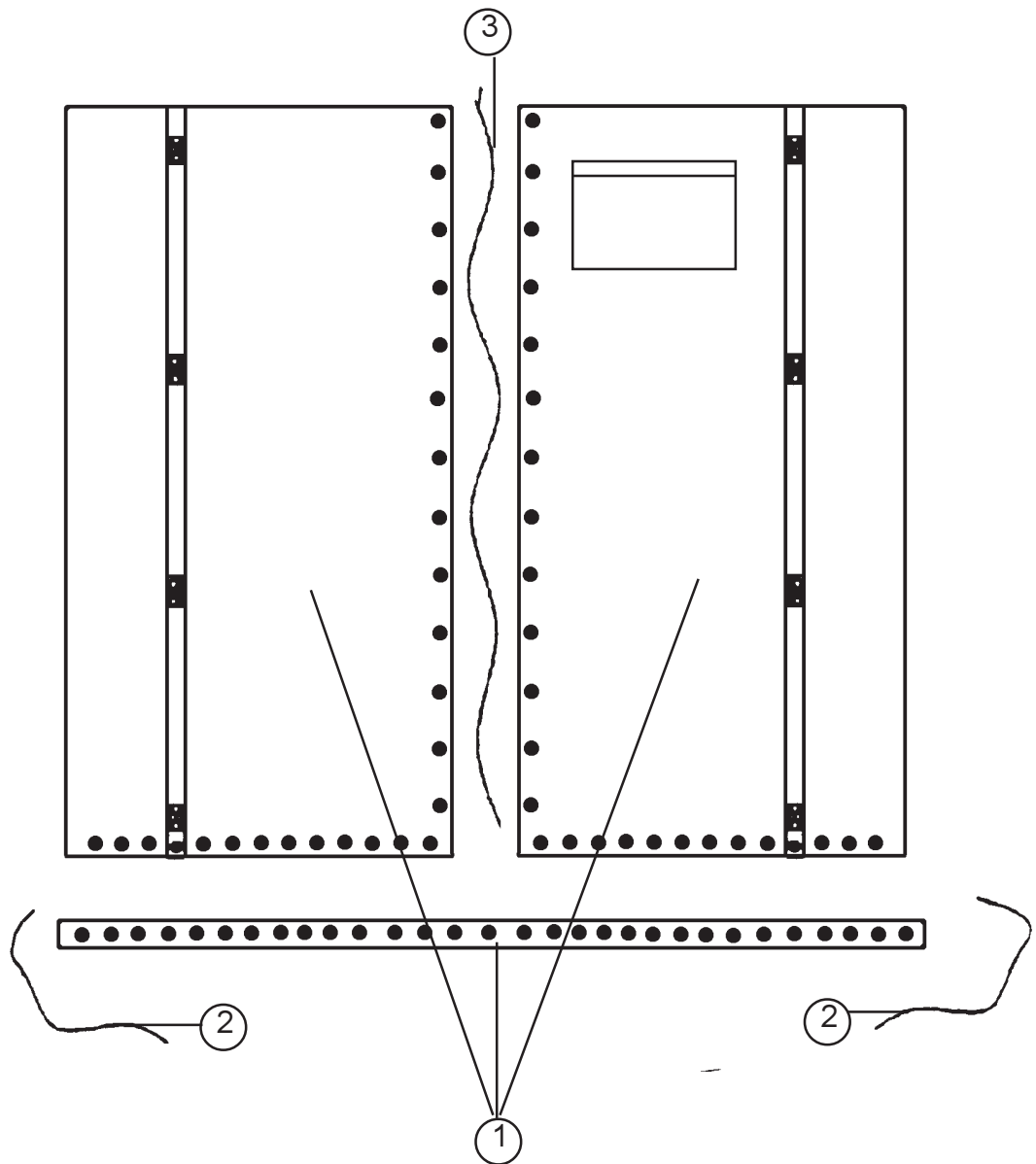
- 1 - 18062532 : Traverse arrière nue
Bare rear crossbar
Achterholm roh
- 2 - 16080535 : Tourelle Monte-Carlo + base
Swivel jam cleat + base
Drehklemme Großschot
- 3- 18060030 : Pontet géant
Pad eye large
Beschlag groß
- 4 - 18000040 : Casting arrière gauche
Rear left casting
Achtreckgussteil links
- 5 - 18000045 : Casting arrière droit
Rear right casting
Achtreckgussteil rechts
- 6 - 99222502 : Gougeon petit modèle
Bar rear inserted bolt small
Stiftschraube klein Achterholm
- 7 - 18060306 : Renfort de gorge
Channel retaining
Gegenstück
- 8 - 18062502 : Entretoise petit modèle
Bushing small model
Distanzhülse klein
- 9 - 18062503 : Entretoise grand modèle
Bushing long model
Distanzhülse groß
- 10- 99220302 : Ecrou indessérable D10
Bar fastening nylstop nut D10
Selbstsichernde Mutter Holm D10
- 11- 99220301 : Vis TCHC D10
Screw TCHC D10
Schraube TCHC D10
- 12- 99220060 : Clé de montage BTR8
Hex key
Montageschlüssel BTR8
- 13- 18060040 : Chariot de grand voile
Main sail traveller
Groß-Segel Traveller
- 14- 18062560 : Casting intérieur
Rear interior casting
Gussteil innen



18060305
Cylindre chariot GV
Cylinder mainsheet trav.

18060311
Bille chariot de GV
Ball mainsheet trav.

HC 18 & 18 Formula
Trampoline/Trampoline/Trampolin



1 - TRAMPOLIN 3 PIECES/3 PIECE TRAMPOLINE/3TEILIGER TRAMPOLIN
 18025005 blanc/white/weiss
 18025205 Bleu/blue/blau
 18025800 Mesh/Netz

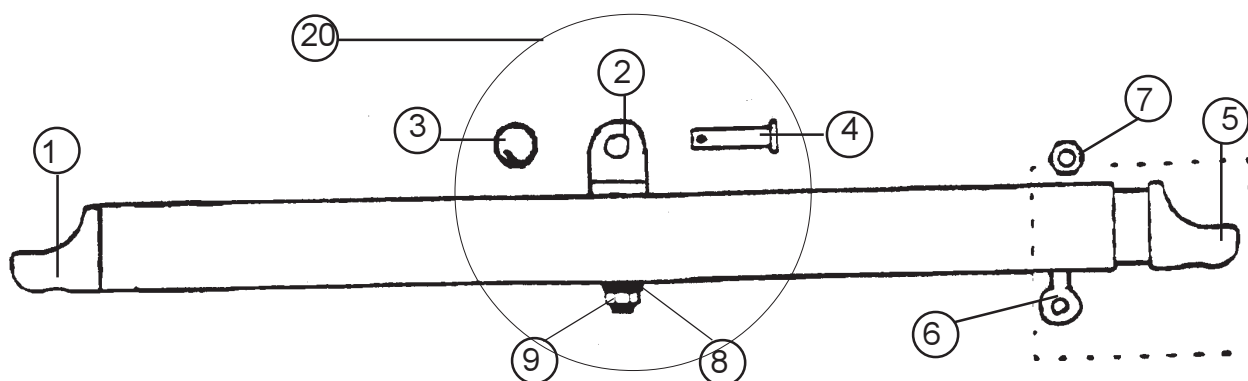
2 - 16070430 : Lacet arrière/Rear trampoline line/Trampolinleine hinten

3 - 16070440 : Lacet central/Center trampoline line/Trampolinleine mitte

HC 18 STD/LE
16062200

HC 18 & 18 Formula
Barre d'accouplement
Tiller crossbar
Anlenkstange

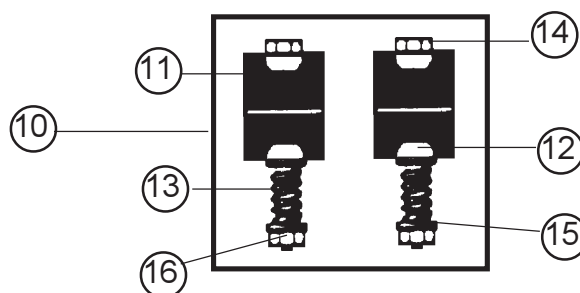
HC 18 FA
18062255



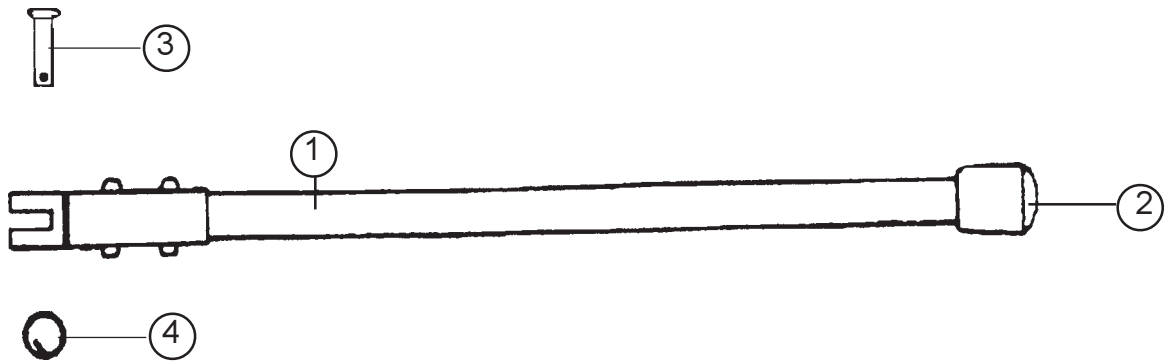
- | | |
|---------------|--------------------------------------------------------------------------------------------|
| 1 - 99000005: | Embout à rotule
Tiller end cap
Pinnenendstück |
| 2 - 99221301: | Vis violon
Violon screw
Bügelschraube |
| 3 - 99220031: | Anneau brisé
Split ring
Ringsplint |
| 4 - 14061240: | Axe percé art. stick
Clevis pin |
| 5 - 99000010: | Bolzen f. Pinnenausleger-Gelenk
Coulisseau réglable
Adjustable tiller end
Gleiter |

- | | |
|----------------|---------------------------------------------------------------------------------------------------|
| 6 - 99220010: | Vis manillon barre d'accouplement
Tiller crossbar shackle bolt
Schraube f. Schäkel Anlenkst |
| 7 - 99220011: | Ecrou HU M8
Nut 08 stainless
Mutter HU M8 |
| 8 - 99061110: | Rondelle inox
Stainless washer
Unterlegscheibe |
| 9 - 99220012: | Ecrou indessérable 8 mm
Nylstop nut 8 mm
Mutter 8mm |
| 10 - 99500380: | Kit d'articulation TCM LE
Tiller connector kit LE
Verbindungsgelenk LE |

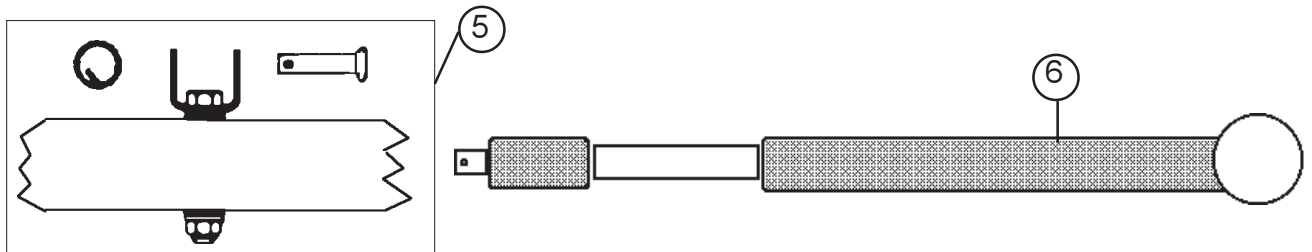
- | | |
|----------------|-------------------------------------------------------------------|
| 11 - 99500331: | Demi-pallier
Rubber spacer
Distanzhülse |
| 12 - 99220029: | Demi-bille nylon
Half ball nylon
Nylon Halbkugel |
| 13 - 99500335: | Ressort TCM
TCM spring
TCM Feder |
| 14 - 99220027: | Vis TH
TH screw
TH Schraube |
| 15 - 99220032: | Rondelle inox
Stainless washer
Scheibe |
| 16 - 99220019: | Ecrou indessérable D6
Nylstop nut D6
Selbstsichernde Mutter |



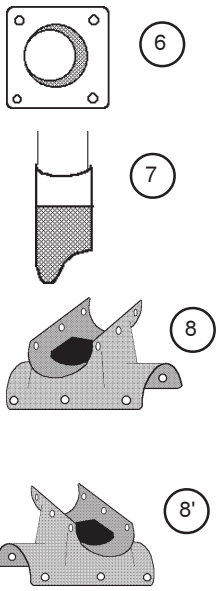
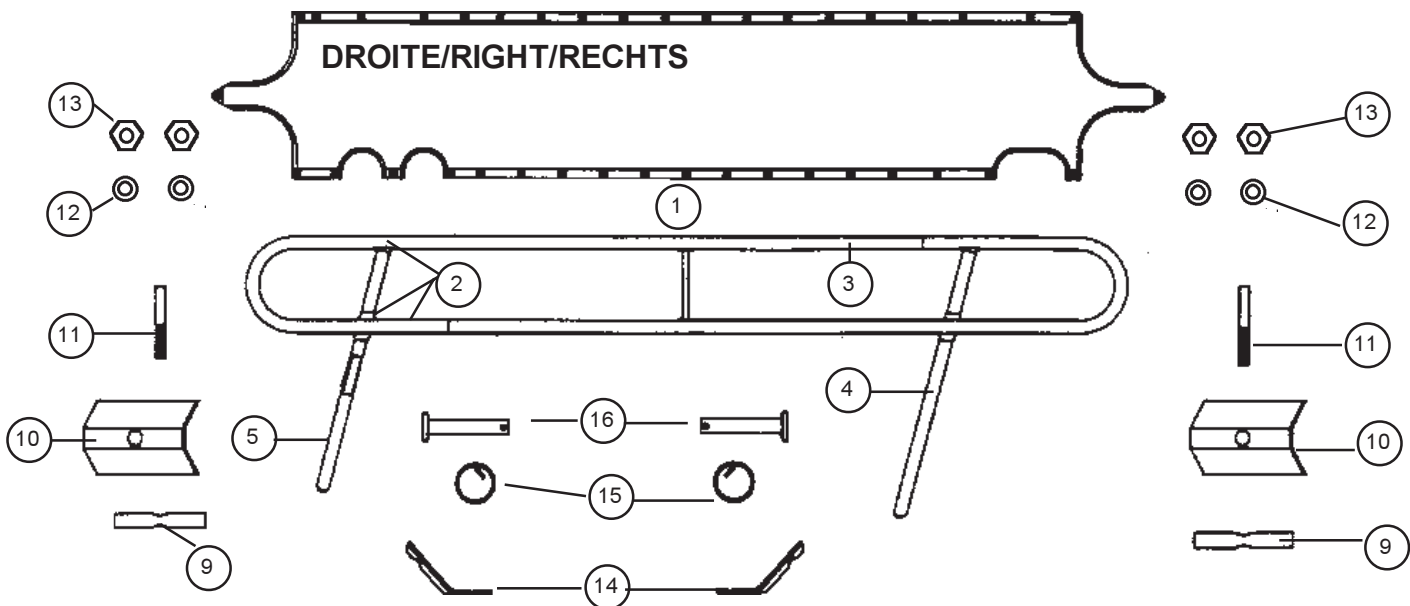
HC 18
Stick/Extension/Pinne



1 - 18062305:	Stick fibre de verre Fiberglass tiller extension Pinnenausleger Fiberglas
2 - 14061310:	Embout stick fibre Fiber stick cap Pinnenendstück Fiberglas
3 - 14061240:	Axe percé art. stick Clevis pin Bolzen Pinnengelenk
4 - 99220031:	Anneau brisé Split ring Ringsplint
5 - 99501310:	Kit d'articulation stick telescopique Connector kit telescopic extension Verbindung Teleskop-Pinnenausleger
6 - 99502310:	Stick télescopique FX6 grand modèle Telescopic tiller extension long Teleskop Pinnenausleger lang
99502330 :	Stick télescopique FX4 petit modèle Telescopic stick small Teleskop-Pinnenausleger klein

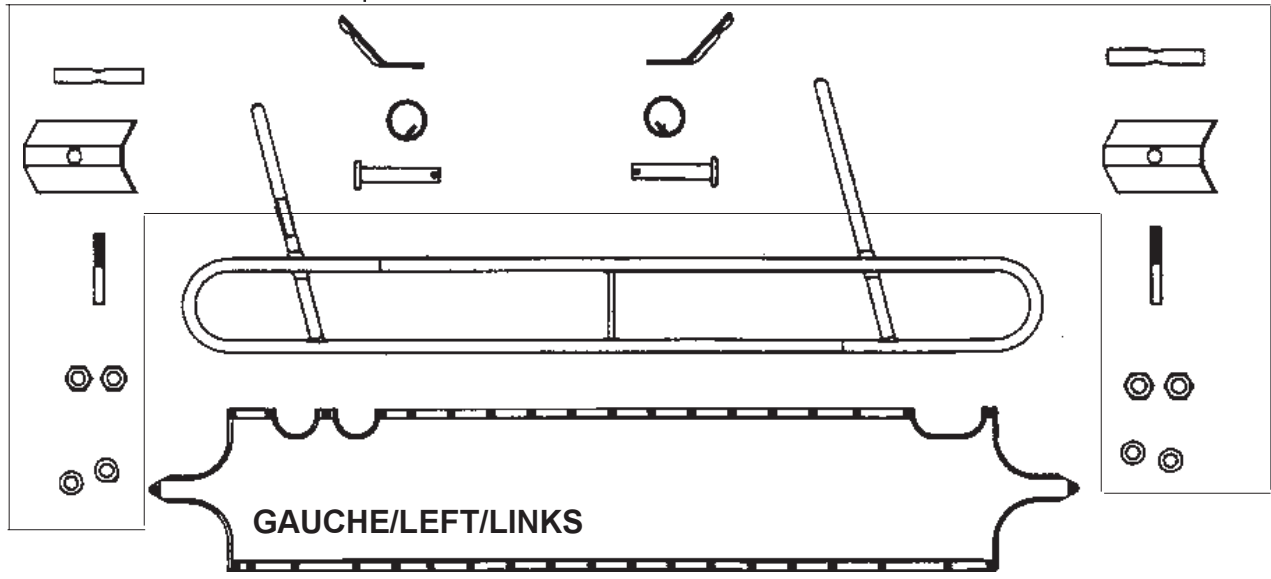


HC18 & 18 Formula Ailes/Wings



- 18025895 : Trampoline d'aile mesh x 2
Wing mesh trampoline x 2
Wing Netztrampoline x 2
- 18025295 : Trampoline bleu d'aile x 2
Blue trampoline for wing x 2
Blaues Trampoline für Wing x 2
- 18025095 : Trampoline blanc d'aile x 2
White trampoline for wing x 2
Weisses Trampoline für Wing x 2

- 18060440 : Cordage D6 pour aile
Rope D6 for wing
Leine D6 für Wing
- 18062970 : Kit de montage 2 ailes (ss aile ss tramp)
Assembly kit for 2 wings (w/o wings w/o tramp)
Aufbaukit für 2 Wings (ohne Wing ohne Tramp.)



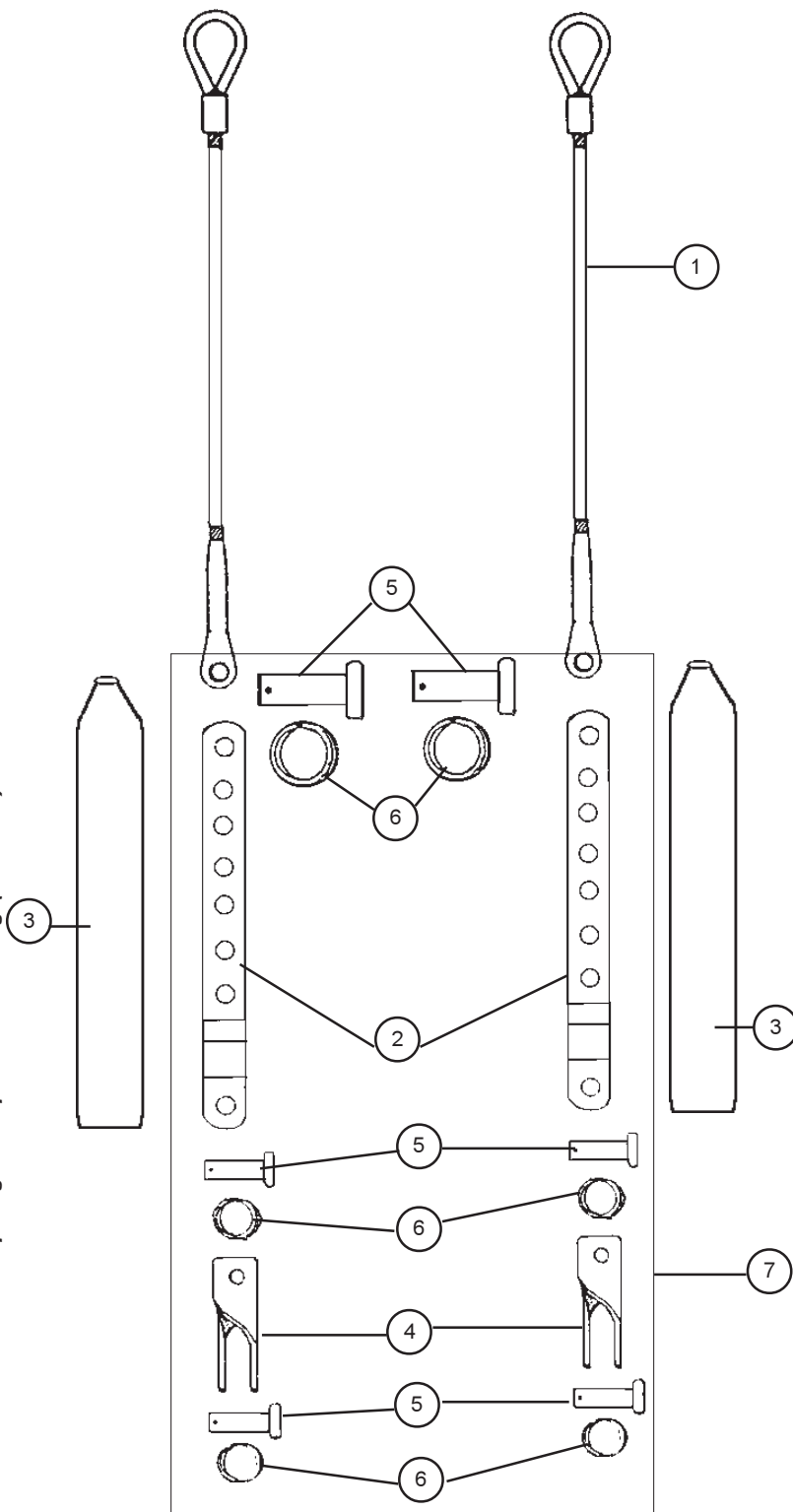
HC18 - Eclaté des pièces détachées/Illustrated part guide/Explosionszeichnung (2000-2001)

HC18 & 18 Formula Ailes/Wings

- | | | |
|----|-----------|-------------------------------------------------------------------------------------------------------------------|
| 1 | 18062915: | Aile gauche compl ss tramp
Left wing compl. w/o tramp
Wing links kompl. ohne Tramp. |
| 1' | 18062916! | Aile droite compl. ss tramp
Right wing compl. w/o tramp
Wing rechts kompl. ohne Tramp. |
| 2 | 18063010: | Assise aile gauche compl. ss tramp
Left bare wing compl. without tramp
Wing Sitzfläche links ohne Tramp. |
| 2' | 18063020: | Assise aile droite compl. ss tramp
Right bare wing compl. without tramp.
Wing Sitzfläche rechts ohne Tramp. |
| 3 | 21062930: | Assise d'aile nue
Bare wing
Außenholm roh |
| 4 | 18060341: | Bras d'aile avant gauche compl.
Compl. Wing arm front left
Wingarm vorne links Kompl. |
| 4' | 18060340: | Brais d'aile avant droit compl.
Compl. Wingarm front right
Wingarm vorne rechts kompl. |
| 5 | 18060343: | Bras d'aile arrière gauche compl.
Compl. wing arm rear left
Wingarm hinten links kompl. |
| 5' | 18060342: | Bras d'aile arrière droit compl.
Compl. wing arm rear right
Wingarm hint. rechts kompl. |
| 6 | 18041733: | Casting embout de wing
End casting
Gußeckendstück Wing |
| 7 | 18000015: | Casting base wing
Wing base casting
Wing-Einsteckgußteil |
| 8 | 18041732: | Casting croix wing gauche
Cross casting wing left
Gußecke kreuz Wing links |
| 8' | 18041734: | Casting croix wing droit
Cross casting wing right
Gußecke kreuz Wing rechts |
| 9 | 18062942: | Barre d'assemblage
Assembly bar
Verbindungsstück |
| 10 | 18062944: | Renfort inox
Inox back up plate
Inox Verstärkung |
| 11 | 18062941: | Vis STHC D8
Screw STHC D8
Schraube STHC D8 |
| 12 | 99061110: | Rondelle D8
Washer D8
Unterlegscheibe D8 |
| 13 | 99220012: | Ecrou indessérable D8
Nylstop nut
Selbstsichernde Mutter |
| 14 | 18062945: | Equerre fixation aile
Strut tab.
Winkel für Wingbefestigung |
| 15 | 99220031: | Anneau brisé
99220131 (x50) Split ring
99220230 (x10) Ringsplint |
| 16 | 18060350: | Axe blocage
Clevis pin
Blockierungsachse |

HC 18 & 18 Formula Haubans/Shrouds/Wanten

HC18 - Eclaté des pièces détachées/Illustrated part guide/Explosionszeichnung (2000-2001)

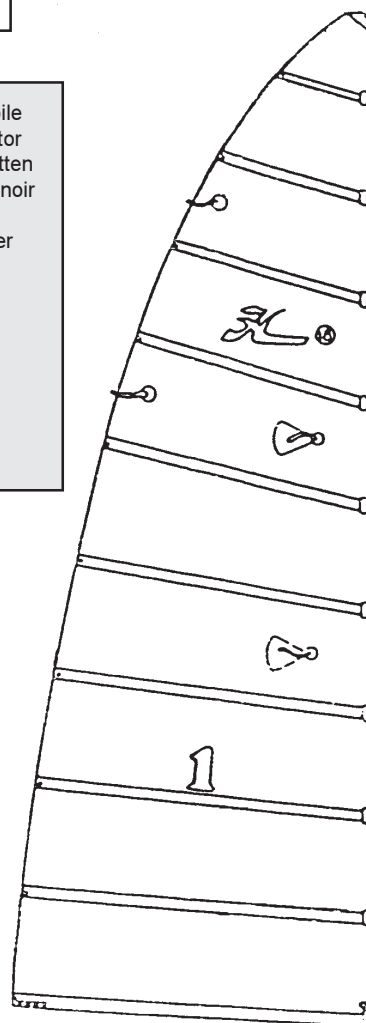
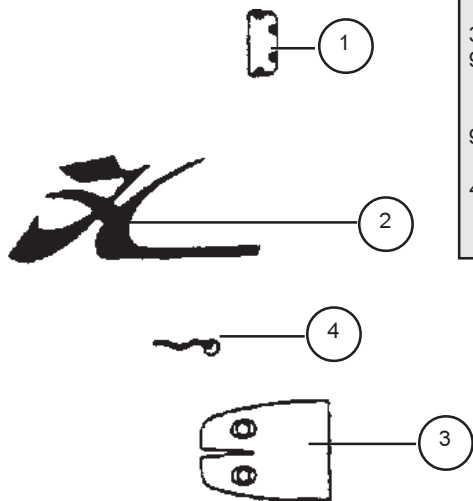


- | | | |
|------------------------------|---------------------------------------------------------------------------------|-----------------------|
| 1 - Hauban / Shroud / Wanten | 18060510 : | HC 18 STD/LE |
| | 18060509 : | HC 18 Fa |
| 2 - 99220033 : | Latte ridoire universelle
Stay adjuster
Wanteisen | |
| 3 - 99500360 : | Gaine latte ridoire | |
| | 99500363 (x2) | Shroud adjuster cover |
| | 99500364 (x20) | Wantenschutz |
| 4 - 16060312 : | Chape hauban
Toggle
Wanten Toggle | |
| 5 - 99220034 : | Axe percé latte ridoire
Clevis pin
Bolzen für Wanteisen gebohrt | |
| 6 - 99220031 : | Anneau brisé | |
| | 99220131 (x10) | Split ring |
| | 99220230 (x50) | Ringsplint |
| 7 - 18034090 : | Assemblage 2 lattes ridoires
Stay adjuster assembly
Wanteisen Kit 2 Stück | |

HC 18

Grand voile & lattes Main sail & batten Gross-Segel & Latten

- 1 - 99504010 : Demi-butée grand voile
Batten pocket protector
1/2 Anschlag GS Latten
- 2 - 99267286 : Autocollant sigle "H" noir
"H" black sticker
"H" schwarz Aufkleber
- 3 - 99500325 : Embout de latte LE
99500650 (x10) Battens end cap LE
Latten Endstück LE
14034110 : Embout de latte Std
99500600 (x10) Battens end cap Std
Latten Endstück Std
- 4 - 99500072 : Flamme de voile
Telltail
Telltail



- 5 - 18034060 : Jeu de lattes 18 LE Grand voile
Batten set 18 LE Main sail
Lattensatz 18 LE Großsegel
- 18034000 : Jeu de lattes 18 STD Grand voile
Batten set 18 STD Main sail
Lattensatz 18 STD Großsegel

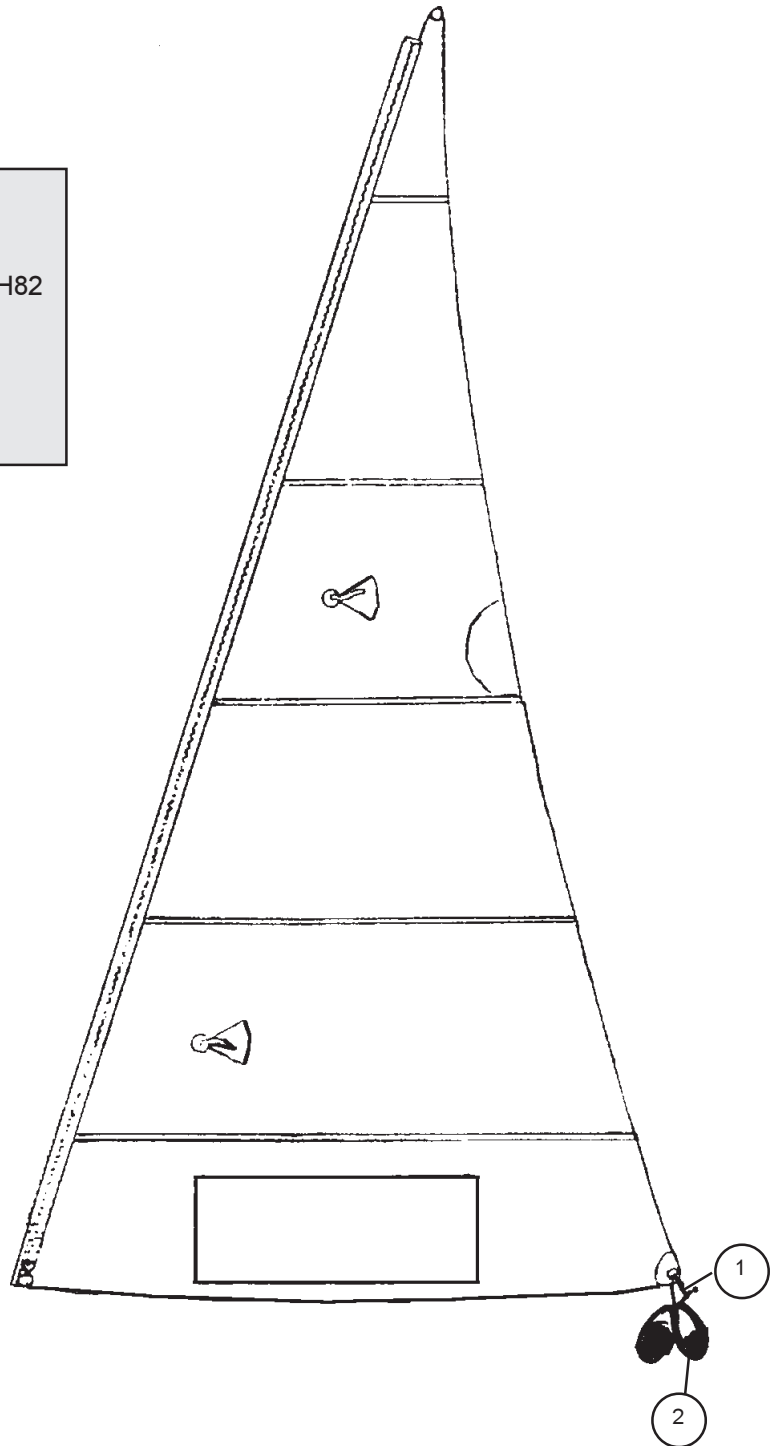
Jeu de lattes 18 Fa GV/Battens set 18 Fa main
/Lattensatz 18Fa G.S
18034011
18034030 (US G)
18034051 (Sandwich)

STANDARD	LE	FA	
18034010	18034040	18034020	
18034009	18034039	18034019	
18034008	18034038	18034018	
18034007	18034037	18034017	
18034006	18034036	18034016	
18034005	18034035	18034015	
18034004	18034034	18034014	
18034003	18034033	18034013	
18034002	18034032	18034012	
18034001	18034031	-	

HC18 - Eclaté des pièces détachées/Illustrated part guide/Explosionszeichnung (2000-2001)

HC 18
Foc/Jib/Fock

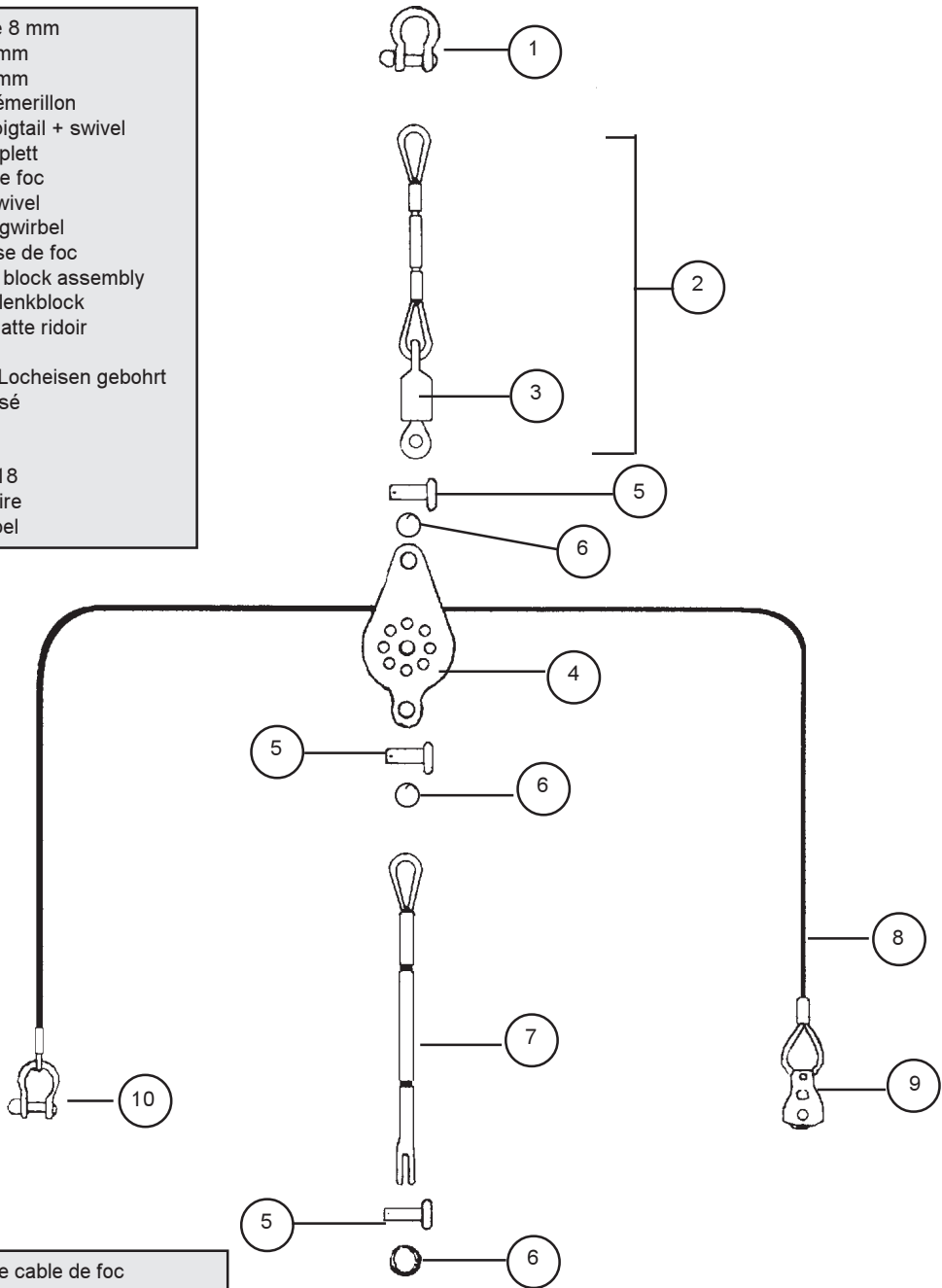
- | | |
|----------------|------------------------------------------------------------------|
| 1 - 99220042 : | Manille de Poulie
Block shackle
Blockschäkel |
| 2 - 99500114 : | Poulie simple Harken H82
Harken block H82
Harken Block H82 |
| 3 - 18060480 : | Ecoute de foc
Jib halyard
Fockschot |



Foc/Jib/Fock :
pour les couleurs : voir tarif
for colors : see price list
Farben : siehe Preisliste

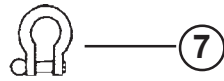
HC 18
 Etai et drisse cable de foc
 Forestay and jib halyard wire
 Vorstag und Fockfall
 18060522 (Std & LE)
 18060525 (Fa)

- 1 - 99220058 : Manille lyre 8 mm
Shackle 8 mm
Schäkel 8 mm
- 2 - 18060530 : Estrope + émerillon
Complete pigtail + swivel
Pigtail komplett
- 3 - 18060590 : Pivot étai de foc
Forestay swivel
Fockvorstagwirbel
- 4 - 18060540 : Poulie drisse de foc
Jib halyard block assembly
Fockfallumlenkblock
- 5 - 99220034 : Axe percé latte ridoir
99220081 (x50) Clevis pin
Bolzen für Locheisen gebohrt
- 6 - 99220031 : Anneau brisé
99220131 (x50) Split ring
99220230 (x10) Ringsplint
- 7 - 18060520 : Etai cable 18
18060521 (Fa) Forestay wire
Vorstagkabel



- 8 - 18060550 : Drisse cable de foc
18060552 (Fa) Jib halyard wire
Fockfallkabel
- 9 - 18080100 : Poulie étarquage drisse de foc
Jib halyard block
Fockfallblock
- 10 - 99220036 : Manille lyre 4 mm
99220097 (x50) Shackle 4 mm
Schäkel 4 mm

HC 18 & 18 Formula Trapèze/Trapeze/Trapez

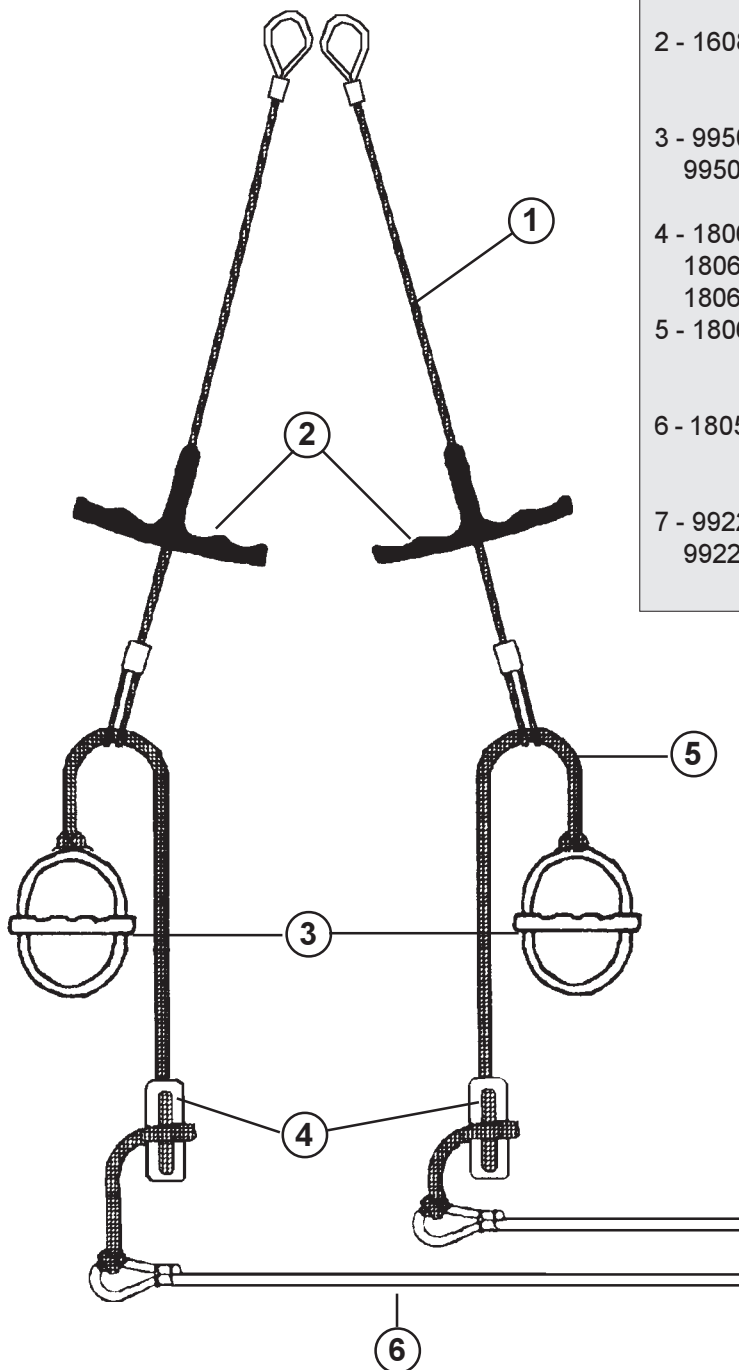


**Jeu de trapèze 2 cables / Trapeze
set 2 wires / Trapezsatz 2 Käbel :**

2 x ① 2 x ③ 2 x ④

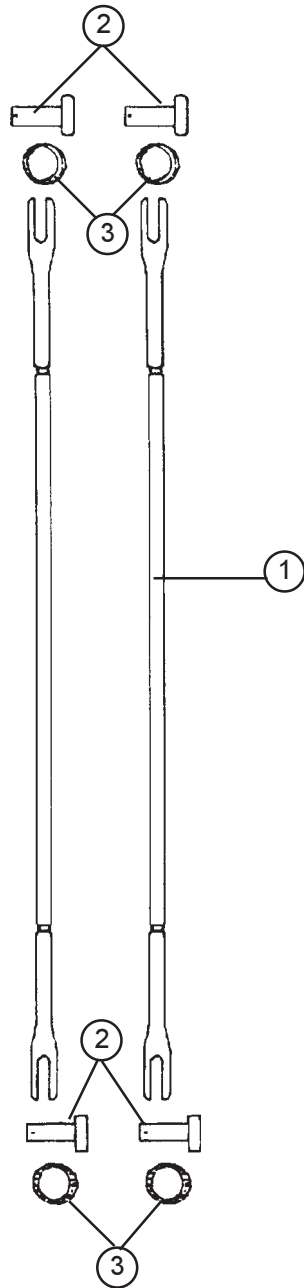
HC 18 LE = 18060570

HC 18 FA = 18060571



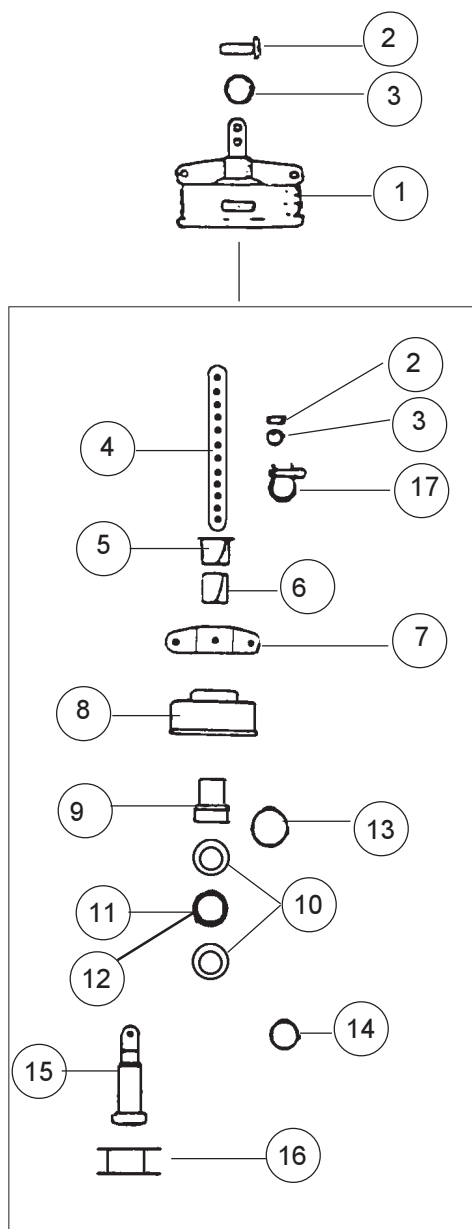
- 1 - 18060578 : Cable trapèze gainé
Coated trapeze wire
Trapezkabel überzogen
- 2 - 16080552 : Poignée de trapèze
Trapeze handle
Trapezgriff
- 3 - 99500040 (x2) Poignée J&H
99500032 (x20) J&H handle
J&H Trapezgriff
- 4 - 18060301 : Double anneau réglage trap.
18060312 (x20) Rope lock trapeze
18060313 (x40) Trapezschtotstopper
- 5 - 18060420 : Cordage D5 réglage trap.
Trapeze line D5
Trapezleine D5
- 6 - 18056036 : Sandow trapèze 1 boucle
Trapeze sandow 1 buckle
Gummistrop
- 7 - 99220058 : Manille Lyre 8 mm
99220210 (x10) Shackle 8 mm
Schäkel 8 mm

HC 18 & 18 Formula Brides/Bridles/Hahnepot



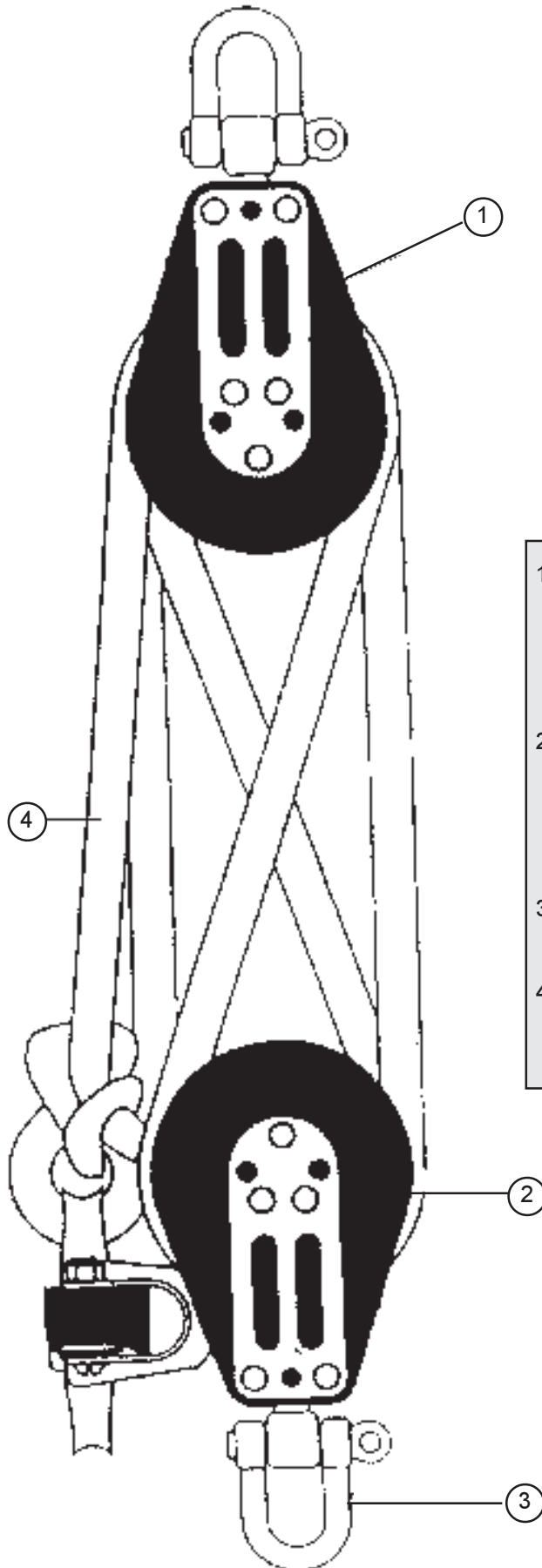
- | | |
|----------------|--------------------------------------------|
| 1 - 18060580 : | Bride (18 & 18 Fa)
Bridle
Hahnepot |
| 2 - 99220034 : | Axe percé latte ridoire |
| 99220081 (x50) | Clevis pin
Bolzen für Locheisen gebohrt |
| 3 - 99220031 : | Anneau brisé |
| 99220131 (x50) | Split ring |
| 99220230 (x10) | Ringsplint |

HC18 & 18 FA
Enrouleur de foc
Jib furling assembly
Fockroller - 21060150



- | | |
|-----------------|--------------------------------------------------------------------------|
| 1 - 21060150 : | Enrouleur
Jib furling assembly
Fockroller |
| 2 - 99220034 : | Axe percé latte ridoir |
| 99220081 (x50) | Clevis pin
Bolzen für Locheisen |
| 3 - 99220031 : | Anneau brisé |
| 99220131 (x50) | Split ring |
| 99220230 (x10) | Ringsplint |
| 4 - 99220350 : | Latte ridoire enrouleur
Furling stay adjuster
Fockroller-Locheisen |
| 5 - 21060151 : | Entretoise nylon supérieure
Upper nylon bushing
Obere Nylon Hülse |
| 6 - 21060152 : | Entretoise nylon inférieure
Lower nylon bushing
Untere Nylon Hülse |
| 7 - 21060590 : | Coupleur à brides
Yoke
Hahnepotverkappung |
| 8 - 21060153 : | Carter plastic
Housing see pool
Plastikgehäuse |
| 9 - 21060157 : | Entretoise métal
Sleeve
Metallhülse |
| 10 - 21060158 : | Flasque roulement
Bearing race
Kugellagerseitenwand |
| 11 - 21060154 : | Cage de roulement
Bearing cage
Kugellager Gehäuse |
| 12 - 21060156 : | Bille de roulement
Bearings
Kugellager |
| 13 - 21060305 : | Circlips grand modèle
Darby ring large
Offener Ring gross |
| 14 - 21060306 : | Circlips petit modèle
Darby ring small
Offener Ring klein |
| 15 - 21060313 : | Axe principal
Tube
Hauptachse |
| 16 - 21060155 : | Bobine
Spool
Trommel Fockroller |
| 17 - 99220035 : | Manille 6 mm |
| 99220092 (x20) | Shackle 6 mm |
| 99220093 (x50) | Schäkel 6 mm |

HC18
Poulies/Blocks/Blöcke



1 - 99500131:	Poulie Harken triple Harken triple upper block Dreifacher Knarrblock Harken
16080353:	Poulie triple Sailspeed de bôme Sailspeed upper block Dreifacher Baumblock Sailspeed
2 - 99500132:	Poulie winch Harken triple Harken triple winch block Dreifacher Knarrblock Harken
16080370:	Poulie winch triple Sailspeed Sailspeed triple winch block Dreifacher Knarrblock Sailspeed
3 - 99220042:	Manille de poulie Block shackle Blockschäkel
4 - 18060470:	Ecoute de grand voile Mainsheet rope Großschot